

BANSAL CLASSES

Ideal for Scholars

PART II-CHEMISTRY PAPER-II

SECTION 1 (Maximum Marks : 32)

- * This section contains **EIGHT** questions
- * The answer to each question is a **SINGLE DIGIT INTEGER** ranging from 0 to 9, both inclusive.
- * For each question, darken the bubble corresponding to the correct integer in the ORS
- * Marking scheme :
 - +4 If the bubble corresponding to the answer is darkened.
 - 0 In all other cases

Q.21 electrochemistry + Ionic The molar conductivity of a solution of a weak acid HX (0.01 M) is 10 times smaller than the molar conductivity of a solution of a weak acid HY (0.10 M). If $\lambda_{x-}^0 \approx \lambda_{y-}^0$, the difference in their pK_a values, $pK_a(\text{HX}) - pK_a(\text{HY})$, is (consider degree of ionisation of both acids to be $\ll 1$)

Ans. 3

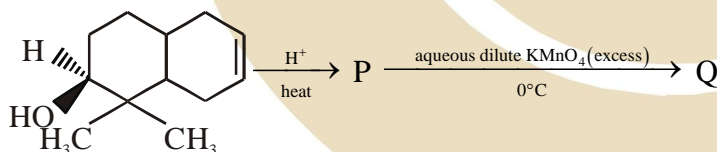
Q.22 chemical kinetics A closed vessel with rigid walls contains 1 mol of ${}^{238}_{92}\text{U}$ and 1 mol of air at 298 K. Considering complete decay of ${}^{238}_{92}\text{U}$ to ${}^{206}_{82}\text{Pb}$, the ratio of the final pressure to the initial pressure of the system at 298K is

Ans. 9

Q.23 chemical kinetics In dilute aqueous H_2SO_4 , the complex diaquodioxalatoferate(II) is oxidized by MnO_4^- . For this reaction, the ratio of the rate of change of $[\text{H}^+]$ to the rate of change of $[\text{MnO}_4^-]$ is

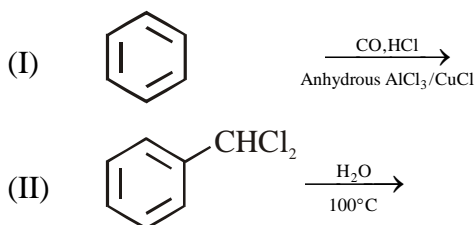
Ans. 8

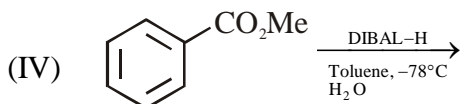
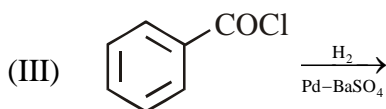
Q.24 Hydrocarbons (11th) The number of hydroxyl group(s) in Q is



Ans. 4

Q.25 Aromatic compounds (12th) Among the following the number of reaction(s) that produce(s) benzaldehyde is





Ans. 4

Q.26 Coordination compound In the complex acetybromidodicarbonylbis(triethylphosphine)iron(II), the number of Fe-C bond (S) is

Ans. 3

Q.27 Coordination compound Among the complex ions $[\text{Co}(\text{NH}_2-\text{CH}_2-\text{CH}_2-\text{NH}_2)_2\text{Cl}_2]^+$, $[\text{CrCl}_2(\text{C}_2\text{O}_4)_2]^{3-}$, $[\text{Fe}(\text{H}_2\text{O})_4(\text{OH})_2]^+$, $[\text{Fe}(\text{NH}_3)_2(\text{CN})_4]^-$, $[\text{Co}(\text{NH}_2-\text{CH}_2-\text{CH}_2-\text{NH}_2)_2(\text{NH}_3)\text{Cl}]^{2+}$ and $[\text{Co}(\text{NH}_3)_4(\text{H}_2\text{O})\text{Cl}]^{2+}$, the number of complex ion(s) that show(s) cis-trans isomerism is

Ans. 6

Q.28 p-block group-13 Three moles of B_2H_6 are completely reacted with methanol. The number of moles of boron containing product formed is

Ans. 6

SECTION 2(Maximum Marks : 32)

Q.29 Salt analysis The pairs(s) of ions where BOTH the ions are precipitated upon passing H_2S gas in presence of dilute HCl , is (are)

- (A) $\text{Ba}^{2+}, \text{Zn}^{2+}$ (B) $\text{Bi}^{3+}, \text{Fe}^{3+}$ (C*) $\text{Cu}^{2+}, \text{Pb}^{2+}$ (D*) $\text{Hg}^{2+}, \text{Bi}^{3+}$

Ans. CD

Q.30 p-block group-14 Under hydrolytic conditions, the compounds used for preparation of linear polymer and for chain termination, respectively, are

- (A) CH_3SiCl_3 and $\text{Si}(\text{CH}_3)_4$ (B*) $(\text{CH}_3)_2\text{SiCl}_2$ and $(\text{CH}_3)_3\text{SiCl}$
 (C) $(\text{CH}_3)_2\text{SiCl}_2$ and CH_3SiCl_3 (D) SiCl_4 and $(\text{CH}_3)_3\text{SiCl}$

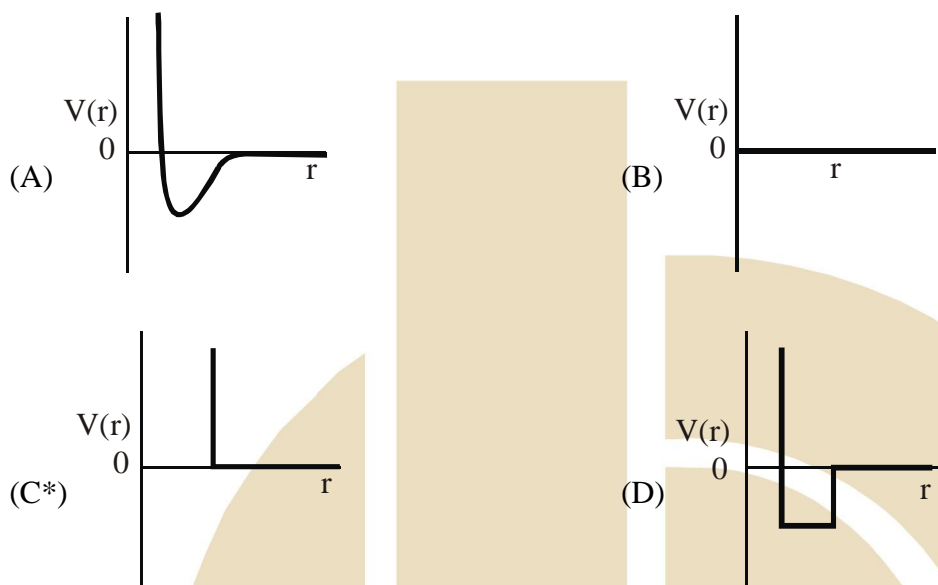
Ans. B

Q.31 chemical bonding When O_2 is adsorbed on a metallic surface, electron transfer occurs from the metal to O_2 . The TRUE statement(s) regarding the adsorption is(are)

- (A) O_2 is physisorbed (B*) heat is released
 (C*) Occupancy of π_{2p}^* of O_2 is increased (D*) bond length of O_2 increased

Q.32_{Gaseous state}

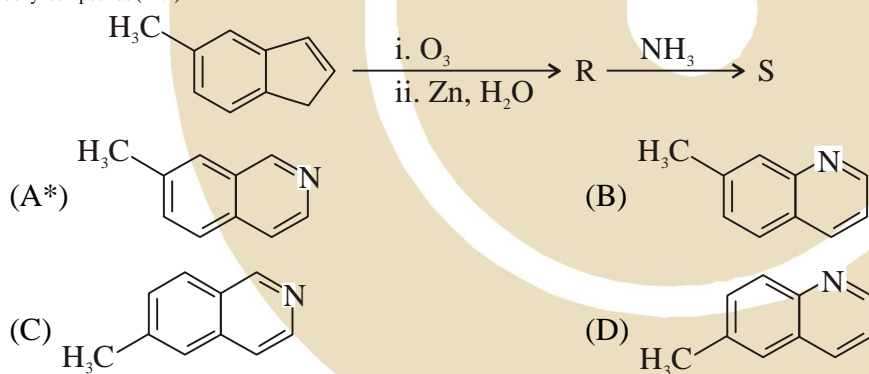
One mole of a monoatomic real gas satisfies the equation $p(V - b) = RT$ where b is a constant. The relationship of interatomic potential $V(r)$ and interatomic distance r for the gas is given by



Ans. C

Q.33_{Carbonyl compounds (12th)}

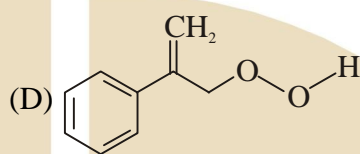
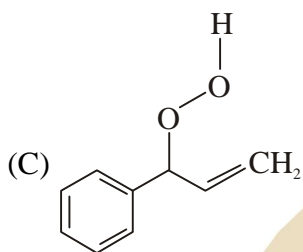
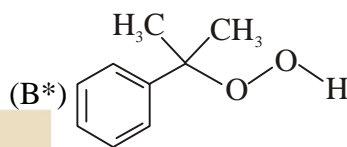
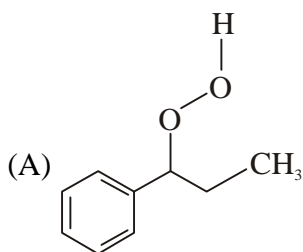
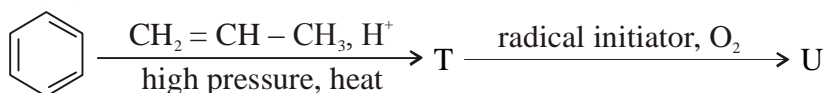
In the following reactions, the product S is



Ans. A

Q.34 Aromatic compounds (12th)

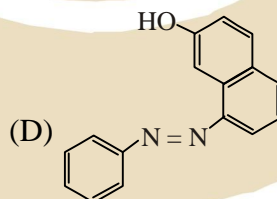
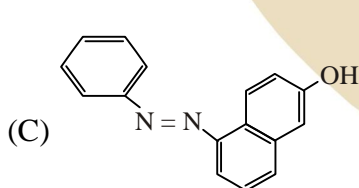
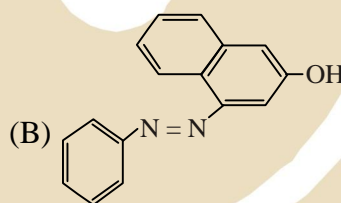
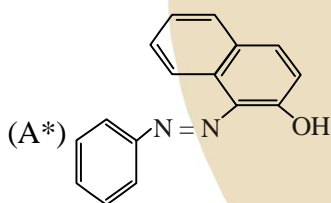
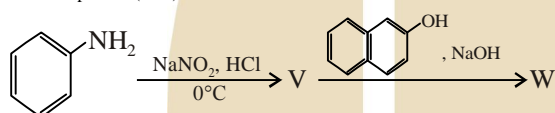
The major product U in the following reactions is



Ans. B

Q.35 Aromatic compounds (12th)

In the following reactions, the major product W is



Ans. A

Q.36 p-block group-17 The correct statement(s) regarding, (i) HClO, (ii) HClO₂, (iii) HClO₃ and (iv) HClO₄, is(are)

- (A) The number of Cl = O bonds in (ii) and (iii) together is two
- (B*) The number of lone pairs of electrons on Cl in (ii) and (iii) together is three
- (C*) The hybridization of Cl in (iv) is sp³
- (D) Amongst (i) to (iv), the strongest acid is (i)

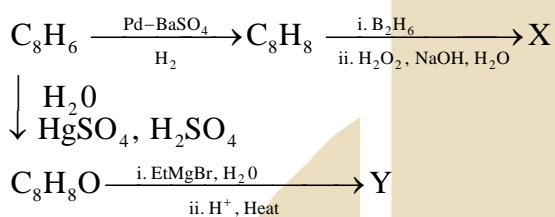
Ans. BC

Section-3 (Maximum Marks : 16)

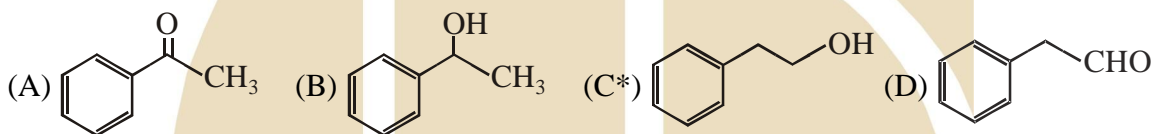
- This section contains **TWO** paragraphs
- Based on each paragraph, there will be **TWO** questions.
- Each question has **FOUR** options (A), (B), (C) and (D). One or more than one of these four option(s) is(are) correct.
- For each question, darken the bubble(s) corresponding to all the correct option(s) in the ORS.
- Marking Scheme:
 + 4 If only bubble(s) corresponding to all the correct option(s) is(are) darkened.
 0 If none of the bubbles is darkened.
 - 2 In all other cases.

Paragraph 1

In the following reactions



Q.37 Grignard Reagents (XIIth) Compound X is



Ans. C

Q.38 Grignard Reagents (XIIth) The major compound Y is



Ans. D

PARAGRAPH 2

When 100 mL of 1.0 M HCl was mixed with 100 mL of 1.0 M NaOH in an insulated beaker at constant pressure, a temperature increase of 5.7°C was measured for the beaker and its contents (**Expt. 1**). Because the enthalpy of neutralization of a strong acid with a strong base is a constant ($-57.0 \text{ kJ mol}^{-1}$), this experiment could be used to measure the calorimeter constant.

In a second experiment (**Expt. 2**), 100 mL of 2.0 M acetic acid ($K_a = 2.0 \times 10^{-5}$) was mixed with 100 mL of 1.0 M NaOH (under identical conditions of **Expt. 1**) where a temperature rise of 5.6°C was measured.

(Consider heat capacity of all solutions as $4.2 \text{ J g}^{-1}\text{K}^{-1}$ and density of all solutions as 1.0 g mL^{-1})

Q.39^{Thermochemistry} Enthalpy of dissociation (in kJ mol^{-1}) of acetic acid obtained from the **Expt. 2** is
(A*) 1.0 (B) 10.0 (C) 24.5 (D) 51.4

Ans. A

Q.40^{Thermochemistry} The pH of the solution after **Expt.2** is
(A) 2.8 (B*) 4.7 (C) 5.0 (D) 7.0

Ans. B



BANSAL CLASSES

Ideal for Scholars

PART III - MATHEMATICS

SECTION -1 : (MM : 32)

This section contains **8 questions**. The answer to each question is a SINGLE DIGIT INTEGER ranging from 0 to 9, both inclusive. [Marking scheme : +4, 0]

Q.41_{Integration} If

$$\alpha = \int_0^1 \left(e^{9x+3\tan^{-1}x} \right) \left(\frac{12+9x^2}{1+x^2} \right) dx$$

where $\tan^{-1}x$ takes only principal values, then the value of $\left(\log_e |1+\alpha| - \frac{3\pi}{4} \right)$ is [Ans: 9]

Q.42_{Integration} Let $f: \mathbb{R} \rightarrow \mathbb{R}$ be a continuous odd function, which vanishes exactly at one point and $f(1) = \frac{1}{2}$.

Suppose that $F(x) = \int_{-1}^x f(t) dt$ for all $x \in [-1, 2]$ and $G(x) = \int_{-1}^x t |f(f(t))| dt$ for all $x \in [-1, 2]$. If

$$\lim_{x \rightarrow 1} \frac{F(x)}{G(x)} = \frac{1}{14}, \text{ then the value of } f\left(\frac{1}{2}\right) \text{ is}$$

[Ans: 7]

Q.43_{Vector} Suppose that \vec{p}, \vec{q} and \vec{r} are three non-coplanar vectors in \mathbb{R}^3 . Let the components of a vector \vec{s} along \vec{p}, \vec{q} and \vec{r} be 4, 3 and 5, respectively. If the components of this vector \vec{s} along $(-\vec{p} + \vec{q} + \vec{r})$, $(\vec{p} - \vec{q} + \vec{r})$ and $(-\vec{p} - \vec{q} + \vec{r})$ are x, y and z , respectively, then the value of $2x + y + z$ is

[Ans: 9]

Q.44_{Complex No.} For any integer k , let $\alpha_k = \cos\left(\frac{k\pi}{7}\right) + i \sin\left(\frac{k\pi}{7}\right)$, where $i = \sqrt{-1}$. The value of the expression

$$\frac{\sum_{k=1}^{12} |\alpha_{k+1} - \alpha_k|}{\sum_{k=1}^3 |\alpha_{4k+1} - \alpha_{4k-2}|} \text{ is}$$

[Ans: 4]

Q.45_{Seq. & Prog} Suppose that all the terms of an arithmetic progression (A.P.) are natural numbers. If the ratio of the sum of the first seven terms to the sum of the first eleven terms is 6 : 11 and the seventh term lies in between 130 and 140, then the common difference of this A.P. is [Ans: 9]

Q.46_{Binomial Theorem} The coefficient of x^9 in the expansion of $(1+x)(1+x^2)(1+x^3)\dots\dots\dots(1+x^{100})$ is [Ans: 8]

Q.47_{Conic Section(ellipse)} Suppose that the foci of the ellipse $\frac{x^2}{9} + \frac{y^2}{5} = 1$ are $(f_1, 0)$ and $(f_2, 0)$ where $f_1 > 0$ and $f_2 > 0$. Let P_1 and P_2 be two parabolas with a common vertex at $(0, 0)$ and with foci at $(f_1, 0)$ and $(2f_2, 0)$, respectively. Let T_1 be a tangent to P_1 which passes through $(2f_2, 0)$ and T_2 be a tangent to P_2 which passes through $(f_1, 0)$. If m_1 is the slope of T_1 and m_2 is the slope of T_2 , then the value of $\left(\frac{1}{m_1^2} + m_2^2\right)$ is [Ans: 4]

Q.48_{Limits} Let m and n be two positive integers greater than 1. If [Ans: 2]

$$\lim_{\alpha \rightarrow 0} \left(\frac{e^{\cos(\alpha^n)} - e}{\alpha^m} \right) = -\left(\frac{e}{2}\right)$$

then the value of $\frac{m}{n}$ is

SECTION -2 : (MM : 32)

This section contains **8 questions**. Each question has **FOUR** options (A), (B), (C) and (D). **ONE OR MORE THAN ONE** of these four option(s) is(are) correct. [Marking scheme : +4, -2]

Q.49_{Integration} The option(s) with the values of a and L that satisfy the following equation is(are)

$$\frac{\int_0^{4\pi} e^t (\sin^6 at + \cos^4 at) dt}{\int_0^{\pi} e^t (\sin^6 at + \cos^4 at) dt} = L?$$

(A) $a = 2, L = \frac{e^{4\pi} - 1}{e^{\pi} - 1}$

(B) $a = 2, L = \frac{e^{4\pi} + 1}{e^{\pi} + 1}$

(C) $a = 4, L = \frac{e^{4\pi} - 1}{e^{\pi} - 1}$

(D) $a = 4, L = \frac{e^{4\pi} + 1}{e^{\pi} + 1}$

Ans. A,C

Q.50_{AOD(monotonicity)} Let $f, g : [-1, 2] \rightarrow \mathbb{R}$ be continuous function which are twice differentiable on the interval $(-1, 2)$. Let the values of f and g at the points $-1, 0$ and 2 be as given in the following table:

	$x = -1$	$x = 0$	$x = 2$
$f(x)$	3	6	0
$g(x)$	0	1	-1

In each of the intervals $(-1, 0)$ and $(0, 2)$ the function $(f - 3g)''$ never vanishes. Then the correct statement(s) is (are)

(A) $f'(x) - 3g'(x) = 0$ has exactly three solutions in $(-1, 0) \cup (0, 2)$

(B) $f'(x) - 3g'(x) = 0$ has exactly one solution in $(-1, 0)$

(C) $f'(x) - 3g'(x) = 0$ has exactly one solution in $(0, 2)$

(D) $f'(x) - 3g'(x) = 0$ has exactly two solutions in $(-1, 0)$ and exactly two solutions in $(0, 2)$

[Ans: BC]

Q.51_{Integration} Let $f(x) = 7 \tan^8 x + 7 \tan^6 x - 3 \tan^4 x - 3 \tan^2 x$ for all $x \in \left(-\frac{\pi}{2}, \frac{\pi}{2}\right)$. Then the correct expression(s) is(are)

(A) $\int_0^{\pi/4} x f(x) dx = \frac{1}{12}$

(B) $\int_0^{\pi/4} f(x) dx = 0$

(C) $\int_0^{\pi/4} x f(x) dx = \frac{1}{6}$

(D) $\int_0^{\pi/4} f(x) dx = 1$

[Ans: AB]

Q.52_{Integration} Let $f'(x) = \frac{192x^3}{2 + \sin^4 \pi x}$ for all $x \in \mathbb{R}$ with $f\left(\frac{1}{2}\right) = 0$. If $m \leq \int_{1/2}^1 f(x) dx \leq M$, then the possible values of m and M are

(A) $m = 13, M = 24$

(B) $m = \frac{1}{4}, M = \frac{1}{2}$

(C) $m = -11, M = 0$

(D) $m = 1, M = 12$

[Ans: D]

Q.53_{Quad. Eq.} Let S be the set of all non-zero real numbers α such that the quadratic equation $\alpha x^2 - x + \alpha = 0$ has two distinct real roots x_1 and x_2 satisfying the inequality $|x_1 - x_2| < 1$. Which of the following intervals is(are) a subset(s) of S ?

(A) $\left(-\frac{1}{2}, -\frac{1}{\sqrt{5}}\right)$

(B) $\left(-\frac{1}{\sqrt{5}}, 0\right)$

(C) $\left(0, \frac{1}{\sqrt{5}}\right)$

(D) $\left(\frac{1}{\sqrt{5}}, \frac{1}{2}\right)$

[Ans: AD]

Q.54_{ITF} If $\alpha = 3 \sin^{-1}\left(\frac{6}{11}\right)$ and $\beta = 3 \cos^{-1}\left(\frac{4}{9}\right)$, where the inverse trigonometric functions take only the principal values, then the correct option(s) is (are)

(A) $\cos \beta > 0$

(B) $\sin \beta < 0$

(C) $\cos(\alpha + \beta) > 0$

(D) $\cos \alpha < 0$

[Ans: BCD]

Q.55_{Conic Section (Ellipse)} Let E_1 and E_2 be two ellipses whose centres are at the origin. The major axes of E_1 and E_2 lie along the x -axis and y -axis, respectively. Let S be the circle $x^2 + (y - 1)^2 = 2$. The straight line $x +$

$y = 3$ touches the curves S, E_1 and E_2 at P, Q and R , respectively. Suppose that $PQ = PR = \frac{2\sqrt{2}}{3}$. If e_1

and e_2 are the eccentricities of E_1 and E_2 , respectively, then the correct expression(s) is (are)

(A) $e_1^2 + e_2^2 = \frac{43}{40}$

(B) $e_1 e_2 = \frac{\sqrt{7}}{2\sqrt{10}}$

(C) $|e_1^2 - e_2^2| = \frac{5}{8}$

(D) $e_1 e_2 = \frac{\sqrt{3}}{4}$

[Ans: AB]

Q.56_{Conic section (hyperbola)} Consider the hyperbola $H : x^2 - y^2 = 1$ and a circle S with centre $N(x_2, 0)$. Suppose that H and S touch each other at a point $P(x_1, y_1)$ with $x_1 > 1$ and $y_1 > 0$. The common tangent to H and S at P intersects the x -axis at point M . If (l, m) is the centroid of the triangle ΔPMN , then the correct expression(s) is (are)

(A) $\frac{d\ell}{dx_1} = 1 - \frac{1}{3x_1^2}$ for $x_1 > 1$

(B) $\frac{dm}{dx_1} = \frac{x_1}{3(\sqrt{x_1^2 - 1})}$ for $x_1 > 1$

(C) $\frac{d\ell}{dx_1} = 1 + \frac{1}{3x_1^2}$ for $x_1 > 1$

(D) $\frac{dm}{dx_1} = \frac{1}{3}$ for $y_1 > 0$

[Ans: ABD]

SECTION -3: (MM : 16)

This section contains **2 paragraphs**. Each paragraph has **two questions**. Each question has **FOUR** options (A), (B), (C) and (D). **ONE OR MORE THAN ONE** of these four option(s) is(are) correct.

Marking Scheme: [+4, -2]

PARAGRAPH-1

Let n_1 and n_2 be the number of red and black balls, respectively, in box I. Let n_3 and n_4 be the number of red and black balls, respectively, in box II.

Q.57_{Probability} One of the two boxes, box I and box II, was selected at random and a ball was drawn randomly out of this box. The ball was found to be red. If the probability that this red ball was drawn from box II

is $\frac{1}{3}$, then the correct option(s) with the possible values of n_1, n_2, n_3 and n_4 is(are)

(A) $n_1 = 3, n_2 = 3, n_3 = 5, n_4 = 15$

(B) $n_1 = 3, n_2 = 6, n_3 = 10, n_4 = 50$

(C) $n_1 = 8, n_2 = 6, n_3 = 5, n_4 = 20$

(D) $n_1 = 6, n_2 = 12, n_3 = 5, n_4 = 20$

[Ans: AB]

Q.58_{Probability} A ball is drawn at random from box I and transferred to box II. If the probability of drawing a red

ball from box I, after this transfer, is $\frac{1}{3}$, then the correct option(s) with the possible values of n_1 and n_2

is(are)

(A) $n_1 = 4$ and $n_2 = 6$

(B) $n_1 = 2$ and $n_2 = 3$

(C) $n_1 = 10$ and $n_2 = 20$

(D) $n_1 = 3$ and $n_2 = 6$

[Ans: CD]

PARAGRAPH - 2

Let $F : \mathbf{R} \rightarrow \mathbf{R}$ be a thrice differentiable function. Suppose that $F(1) = 0$, $F(3) = -4$ and $F(x) < 0$ for all $x \in \left(\frac{1}{2}, 3\right)$. Let $f(x) = x F(x)$ for all $x \in \mathbf{R}$.

Q.59_{AOD(Monotonicity)} The correct statement(s) is(are)

(A) $f'(1) < 0$

(B) $f(2) < 0$

(C) $f'(x) \neq 0$ for any $x \in (1,3)$

(D) $f'(x) = 0$ for some $x \in (1,3)$

[Ans: ABC]

Q.60_{AOD(Monotonicity)} If $\int_1^3 x^2 F'(x) dx = -12$ and $\int_1^3 x^3 F'' dx = 40$ then the correct expression(s) is(are)

(A) $9f'(3) + f'(1) - 32 = 0$

(B) $\int_1^3 f(x) dx = 12$

(C) $9f'(3) - f'(1) + 32 = 0$

(D) $\int_1^3 f(x) dx = -12$

[Ans: CD]



JEE ADVANCED PAPER-II PART : I - PHYSICS

SECTION 1 (Maximum Marks: 32)

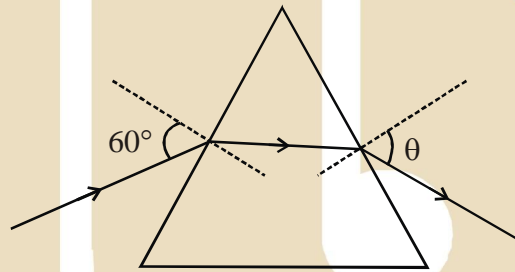
- * This section contains EIGHT questions
- * The answer to each question is a SINGLE DIGIT INTEGER ranging from 0 to 9, both inclusive
- * For each question, darken the bubble corresponding to the correct integer in the ORS

Marking scheme:

+4 If the bubble corresponding to the answer is darkened

0 In all other cases

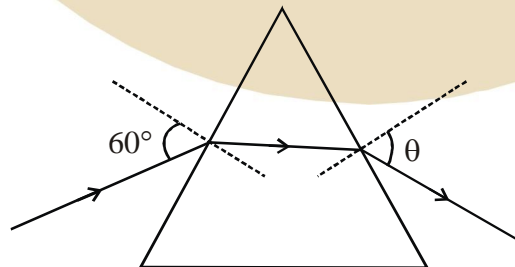
- Q.1 Geometrical optics A monochromatic beam of light is incident at 60° on one face of an equilateral prism of refractive index n and emerges from the opposite face making an angle $\theta(n)$ with the normal (see the figure). For $n = \sqrt{3}$ the value of θ is 60° and $= \frac{d\theta}{dn} m$. The value of m is



Ans: 2

- Q.1 Geometrical optics एकवर्णी प्रकाश का एक पुंज एक n अपवर्तनांक वाले समबाहु प्रिज्म के एक फलक पर 60° के कोण पर आपतित होता है तथा सामने वाले फलक से लम्ब से $\theta(n)$ कोण बनाते हुए निकलता है (चित्र देखें)।

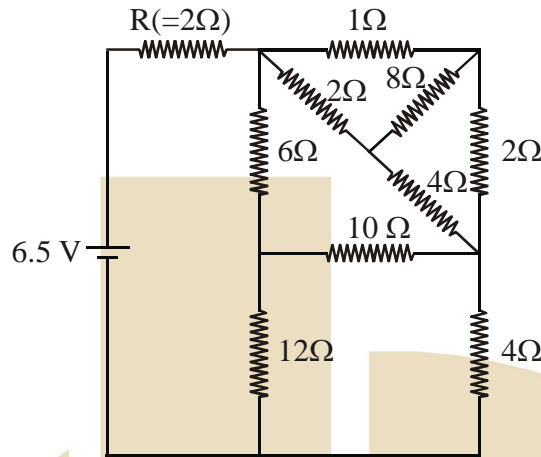
$n = \sqrt{3}$ पर θ का मान 60° है तथा $= \frac{d\theta}{dn} m$ है। तब m का मान है



Ans: 2

Q.2_{Current electricity} In the following circuit, the current through the resistor $R (= 2\Omega)$ is I Amperes. The value of I is

नीचे दिये गये परिपथ में प्रतिरोध $R (= 2\Omega)$ में I एम्पियर धारा प्रवाहित होती है। तब I का मान है—



Ans: 1

Q.3_{Modern physics} An electron in an excited state of Li^{2+} ion has angular momentum $3h/2\pi$. The de Broglie wavelength of the electron in this state is $p\pi a_0$ (where a_0 is the Bohr radius). The value of p is

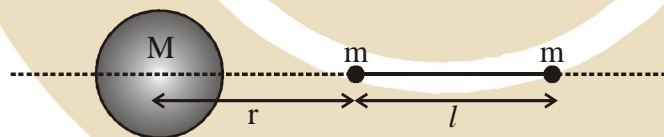
Ans: 2

Q.3_{Modern physics} Li^{2+} आयन की उत्तेजित अवस्था में एक इलेक्ट्रॉन का कोणीय वेग $3h/2\pi$ है। इस अवस्था में इलेक्ट्रॉन की डी-ब्रोग्ली तरंगदैर्घ्य $p\pi a_0$ (जहाँ a_0 बोर radius है) है। p का मान है।

Ans: 2

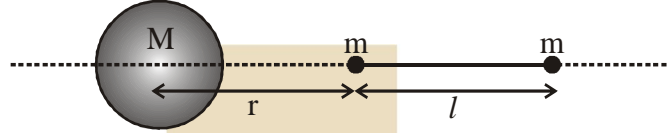
Q.4_{Gravitation} A large spherical mass M is fixed at one position and two identical point masses m are kept on a line passing through the centre of M (see figure). The point masses are connected by a rigid massless rod of length l and this assembly is free to move along the line connecting them. All three masses interact only through their mutual gravitational interaction. When the point mass nearer to M is at a

distance $r = 3l$ from M , the tension in the rod is zero for $m = k \left(\frac{M}{288} \right)$. The value of k is:



Ans: 7

- Q.4_{Gravitation} एक बड़ा गोलाकार द्रव्यमान M एक जगह स्थित है तथा दो एकरूप बिन्दु द्रव्यमान m द्रव्यमान M के केन्द्र से होकर जाने वाली रेखा पर रखे गये हैं (चित्र देखें)। बिन्दु द्रव्यमान l लम्बाई के द्रव्यमान रहित दृढ़ छड़ से जुड़े हैं तथा यह संयोजन उनको जोड़ने वाली रेखा पर गति कर सकता है। सभी द्रव्यमानों में केवल उनका अपना गुरुत्वाकर्षण है। जब M के निकट वाला बिन्दु द्रव्यमान M से $r = 3l$ की दूरी पर है तब $m = k \left(\frac{M}{288} \right)$ के लिए छड़ में तनाव शून्य है। तब k का मान है



Ans: 7

- Q.5_{Error analysis} The energy of a system as a function of time t is given as $E(t) = A^2 \exp(-\alpha t)$, where $\alpha = 0.2 \text{ s}^{-1}$. The measurement of A has an error of 1.25%. If the error in the measurement of time is 1.50%, the percentage error in the value of $E(t)$ at $t = 5 \text{ s}$ is

Ans: 4

- Q.5_{Error analysis} एक निकाय की समय t पर ऊर्जा $E(t) = A^2 \exp(-\alpha t)$ फलन द्वारा दी जाती है, जहाँ $\alpha = 0.2 \text{ s}^{-1}$ है। A के मापन में 1.25% की प्रतिशत त्रुटि है। यदि समय के मापन में 1.50% की त्रुटि है तब $t = 5 \text{ s}$ पर $E(t)$ के मान में प्रतिशत त्रुटि होगी

Ans: 4

- Q.6_{Rotational dynamics} The densities of two solid spheres A and B of the same radii R vary with radial distance r as $\rho_A(r) = k \left(\frac{r}{R} \right)$ and $\rho_B(r) = k \left(\frac{r}{R} \right)^5$, respectively, where k is a constant. The moments of inertia of the individual spheres about axes passing through their centres are I_A and I_B , respectively, If $\frac{I_B}{I_A} = \frac{n}{10}$, the value of n is

Ans: 6

- Q.6_{Rotational dynamics} R त्रिज्या के दो ठोस गोलों A और B के घनत्वों का त्रिज्य दूरी r के साथ संबंध क्रमशः $\rho_A(r) = k \left(\frac{r}{R} \right)$

तथा $\rho_B(r) = k \left(\frac{r}{R} \right)^5$ हैं, जहाँ k एक स्थिरांक है। गोलों के अपने-अपने केन्द्र से होकर जाने वाली अक्षों के परितः

जड़त्वाघूर्ण क्रमशः I_A तथा I_B हैं। यदि $\frac{I_B}{I_A} = \frac{n}{10}$ है, तब n का मान है

Ans: 6

Q.7 Mechanical wave Four harmonic waves of equal frequencies and equal intensities I_0 have phase angles $0, \pi/3, 2\pi/3$ and π . When they are superposed, the intensity of the resulting wave is nI_0 . The value of n is
Ans: 3

Q.7 Mechanical wave बराबर आवृत्तियों तथा तीव्रता I_0 की चार आवर्त तरंगों की कला के कोण $0, \pi/3, 2\pi/3$ तथा π हैं। तब इन तरंगों को अध्यारोपित सुपरपोस (superpose) किया जाता है तो परिणामी तीव्रता nI_0 है। तब n का मान है
Ans: 3

Q.8 Modern physics For a radioactive material, its activity A and rate of change of its activity R are defined as $A = -\frac{dN}{dt}$ and $R = -\frac{dA}{dt}$, where $N(t)$ is the number of nuclei at time t . Two radioactive sources P (mean life τ) and Q (mean life 2τ) have the same activity at $t = 0$. Their rates of change of activities at $t = 2\tau$ are R_p and R_q , respectively. If $\frac{R_p}{R_q} = \frac{n}{e}$, then the value of n is
Ans: 2

Q.8 Modern physics एक रेडियोधर्मी पदार्थ की सक्रियता A एवं सक्रियता परिवर्तन की दर R क्रमशः $A = -\frac{dN}{dt}$ तथा $R = -\frac{dA}{dt}$ संबंधों द्वारा परिभाषित की जाती है, जहाँ समय t पर नाभिकों की संख्या $N(t)$ है। दो रेडियोधर्मी स्रोत P (औसत आयु τ) तथा Q (औसत आयु 2τ) की समय $t = 0$ पर समान सक्रियता है। उनकी सक्रियता परिवर्तन की दरें समय $t = 2\tau$ पर क्रमशः R_p तथा R_q हैं। यदि $\frac{R_p}{R_q} = \frac{n}{e}$, तब n का मान है
Ans: 2

SECTION 2 (Maximum Marks : 32)

- * This section contains EIGHT questions
- * Each questions has FOUR options (A), (B), (C) and (D). ONE OR MORE THAN ONE of these four option(s) is (are) correct
- * For each question, darken the bubble(s) corresponding to all the correct option(s) in the ORS
- * Marking scheme:
 +4 If only the bubble(s) corresponding to all the correct option(s) is (are) darkened
 0 If none of the bubbles is darkened
 -2 In all other cases

Q.9 Gravitation A spherical body of radius R consists of a fluid of constant density and is in equilibrium under its own gravity. If $P(r)$ is the pressure at r ($r > R$), then the correct option(s) is (are)
 (A) $p(r = 0) = 0$ (B) $\frac{P(r = 3R/4)}{P(r = 2R/3)} = \frac{63}{80}$
 (C) $\frac{P(r = 3R/5)}{P(r = 2R/5)} = \frac{16}{21}$ (D) $\frac{P(r = R/2)}{P(r = R/3)} = \frac{20}{27}$

Ans: (B,C)

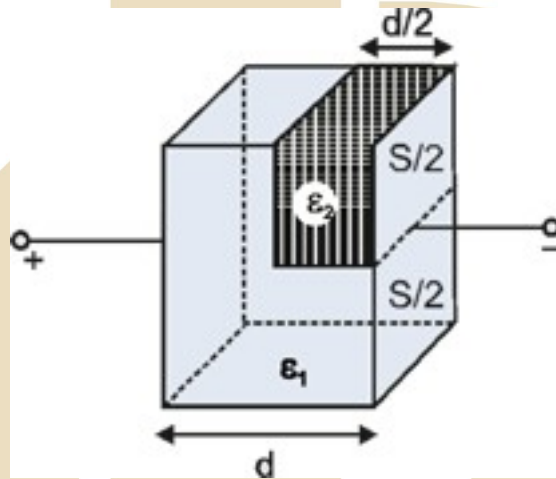
Q.9_{Gravitation} एक एकसमान घनत्व के तरल के गोलाकार पिंड की त्रिज्या R है तथा यह अपने स्वयं के गुरुत्व के प्रभाव में साम्यावस्था में है। यदि इसके केन्द्र से दूरी $r(r > R)$ पर दाब $P(r)$ है, तब सही विकल्प है (हैं)

- (A) $p(r = 0) = 0$ (B) $\frac{P(r = 3R/4)}{P(r = 2R/3)} = \frac{63}{80}$
 (C) $\frac{P(r = 3R/5)}{P(r = 2R/5)} = \frac{16}{21}$ (D) $\frac{P(r = R/2)}{P(r = R/3)} = \frac{20}{27}$

Ans: (B,C)

Q.10_{Capacitance} A parallel plate capacitor having plates of area S and plate separation d , has capacitance C_1 in air. When two dielectrics of different relative permittivity's ($\epsilon_1 = 2$ and $\epsilon_2 = 4$) are introduced between

the two plates as shown in the figure, the capacitance becomes C_2 . The ratio $\frac{C_2}{C_1}$ is

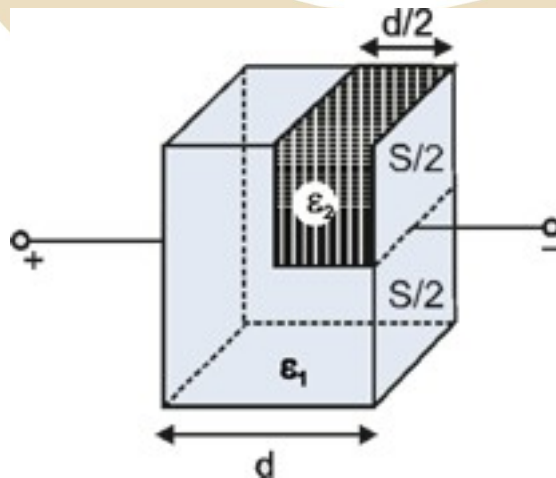


- (A) 6/5 (B) 5/3 (C) 7/5 (D) 7/3

Ans: (D)

Q.10_{Capacitance} एक समांतर पट्टिका संधारित्र की पट्टिकाओं का क्षेत्रफल S तथा पट्टिकाओं के बीच में दूरी d है। तथा इसकी वायु में धारिता C_1 है। जब पट्टिकाओं के मध्य दो अलग-अलग सापेक्ष परावैद्युतांकों ($\epsilon_1 = 2$ तथा $\epsilon_2 = 4$) के परावैद्युत

पदार्थ दशार्थ चित्रानुसार रखे जाते हैं तब इस प्रकार बने नये संधारित्र की धारिता C_2 हो जाती है। तब अनुपात $\frac{C_2}{C_1}$ है।

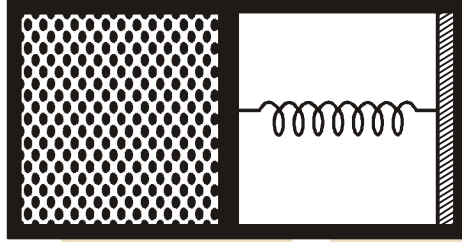


- (A) 6/5 (B) 5/3 (C) 7/5 (D) 7/3

Ans: (D)

Q.11 First law of thermodynamics

An ideal monatomic gas is confined in a horizontal cylinder by a spring loaded piston (as shown in the figure). Initially the gas is at temperature T_1 , pressure P_1 and volume V_1 and the spring is in its relaxed state. The gas is then heated very slowly to temperature T_2 , pressure P_2 and volume V_2 . During this process the piston moves out by a distance x . Ignoring the friction between the piston and the cylinder, the correct statement(s) is (are)

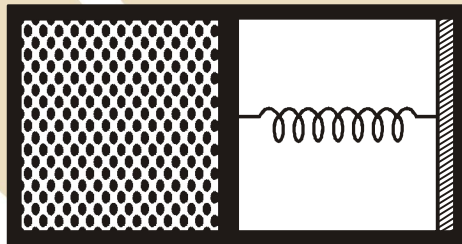


- (A) If $V_2 = 2V_1$ and $T_2 = 3T_1$, then the energy stored in the spring is $\frac{1}{4} P_1 V_1$
- (B) If $V_2 = 2V_1$ and $T_2 = 3T_1$, then the change in internal energy is $3P_1 V_1$
- (C) If $V_2 = 3V_1$ and $T_2 = 4T_1$, then the work done by the gas is $\frac{7}{3} P_1 V_1$
- (D) If $V_2 = 3V_1$ and $T_2 = 4T_1$, then the heat supplied to the gas is $\frac{17}{6} P_1 V_1$

Ans: (ABC OR B)

Q.11 First law of thermodynamics

एक एक-परमाणुक आदर्श गैस एक क्षैतिज बर्तन (horizontal cylinder) में स्प्रिंग-युक्त पिस्टन द्वारा बन्द है (दर्शाये चित्रानुसार)। प्रारंभ में गैस का तापमान T_1 , दाब P_1 तथा आयतन V_1 है तथा स्प्रिंग विश्रांत अवस्था में है अब गैस को बहुत धीरे-धीरे तापमान T_2 तक गर्म करने दाब P_2 तथा आयतन V_2 हो जाता है। इस प्रक्रिया में पिस्टन x दूरी तय करता है। पिस्टन एवं बर्तन के मध्य घर्षण को नगण्य मानते हुए, सही कथन है (हैं)



- (A) यदि $V_2 = 2V_1$ तथा $T_2 = 3T_1$ है, तब स्प्रिंग में संचित ऊर्जा $\frac{1}{4} P_1 V_1$ है।
- (B) यदि $V_2 = 2V_1$ तथा $T_2 = 3T_1$ है, तब आंतरिक ऊर्जा में परिवर्तन $3P_1 V_1$ है।
- (C) यदि $V_2 = 3V_1$ तथा $T_2 = 4T_1$ है, तब गैस द्वारा किया गया कार्य $\frac{7}{3} P_1 V_1$ है।
- (D) यदि $V_2 = 3V_1$ तथा $T_2 = 4T_1$ है, तब गैस को दी गयी ऊष्मा $\frac{17}{6} P_1 V_1$ है।

Ans: (ABC OR B)

Q.12_{Modern physics} A fission reaction is given by ${}^{236}_{92}\text{U} \rightarrow {}^{140}_{54}\text{Xe} + {}^{94}_{38}\text{Sr} + x + y$, where x and y are two particles.

Considering ${}^{236}_{92}\text{U}$ to be at rest, the kinetic energies of the products are denoted by K_{Xe} , K_{Sr} , K_x (2MeV) and K_y (2MeV), respectively. Let the binding energies per nucleon of ${}^{236}_{92}\text{U}$, ${}^{140}_{54}\text{Xe}$ and ${}^{94}_{38}\text{Sr}$ be 7.5 MeV, 8.5 MeV and 8.5 MeV, respectively. Considering different conservation laws, the correct option(s) is (are)

- (A) $x = n, y = n, K_{\text{Sr}} = 129 \text{ MeV}, K_{\text{Xe}} = 86 \text{ MeV}$
- (B) $x = p, y = e^-, K_{\text{Sr}} = 129 \text{ MeV}, K_{\text{Xe}} = 86 \text{ MeV}$
- (C) $x = p, y = n, K_{\text{Sr}} = 129 \text{ MeV}, K_{\text{Xe}} = 86 \text{ MeV}$
- (D) $x = n, y = n, K_{\text{Sr}} = 86 \text{ MeV}, K_{\text{Xe}} = 129 \text{ MeV}$

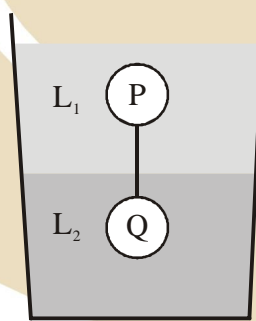
Ans: (AD)

Q.12_{Modern physics} एक विखंडन प्रक्रिया ${}^{236}_{92}\text{U} \rightarrow {}^{140}_{54}\text{Xe} + {}^{94}_{38}\text{Sr} + x + y$ दी गयी है, जहाँ x तथा y दो कण हैं। ${}^{236}_{92}\text{U}$ विरामावस्था में है तथा उत्पादों की गतिज ऊर्जाएँ क्रमशः $K_{\text{Xe}}, K_{\text{Sr}}, K_x$ (2MeV) तथा K_y (2MeV) से दर्शायी गयी है। ${}^{236}_{92}\text{U}$, ${}^{140}_{54}\text{Xe}$ तथा ${}^{94}_{38}\text{Sr}$ की प्रति न्यूक्लियॉन बंधन ऊर्जाओं को क्रमशः 7.5 MeV, 8.5 MeV तथा 8.5 MeV, लें। विभिन्न संरक्षणों नियमों का ध्यान रखते हुए सही विकल्प है (हैं)

- (A) $x = n, y = n, K_{\text{Sr}} = 129 \text{ MeV}, K_{\text{Xe}} = 86 \text{ MeV}$
- (B) $x = p, y = e^-, K_{\text{Sr}} = 129 \text{ MeV}, K_{\text{Xe}} = 86 \text{ MeV}$
- (C) $x = p, y = n, K_{\text{Sr}} = 129 \text{ MeV}, K_{\text{Xe}} = 86 \text{ MeV}$
- (D) $x = n, y = n, K_{\text{Sr}} = 86 \text{ MeV}, K_{\text{Xe}} = 129 \text{ MeV}$

Ans: (AD)

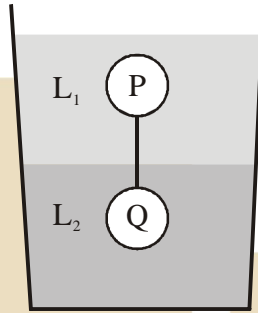
Q.13_{Fluid mechanics} Two spheres P and Q of equal radii have densities ρ_1 and ρ_2 , respectively, The spheres are connected by a massless string and placed in liquids L_1 and L_2 of densities σ_1 and σ_2 and viscosities η_1 and η_2 , respectively. They float in equilibrium with the sphere P in L_1 and sphere Q in L_2 and the string being taut (see figure). If sphere P alone in L_2 has terminal velocity \vec{V}_P and Q alone in L_1 has terminal velocity \vec{V}_Q , then



- (A) $\frac{|\vec{V}_P|}{|\vec{V}_Q|} = \frac{\eta_1}{\eta_2}$
- (B) $\frac{|\vec{V}_P|}{|\vec{V}_Q|} = \frac{\eta_2}{\eta_1}$
- (C) $\vec{V}_P \cdot \vec{V}_Q > 0$
- (D) $\vec{V}_P \cdot \vec{V}_Q < 0$

Ans: (AD)

Q.13 Fluid mechanics बराबर त्रिज्या वाले दो गोलों P तथा Q घनत्व क्रमशः ρ_1 तथा ρ_2 हैं। गोलों को एक द्रव्यमान रहित डोरी से जोड़कर σ_1 एवं σ_2 घनत्व वाले η_1 एवं η_2 श्यानता गुणाकों वाले द्रवों L_1 व L_2 of densities σ_1 and σ_2 and viscosities η_1 and η_2 , respectively. They float in equilibrium with the sphere P in L_1 and sphere Q in L_2 and the string being taut (see figure). If sphere P alone in L_2 has terminal velocity \vec{V}_P and Q alone in L_1 has terminal velocity \vec{V}_Q , then



(A) $\frac{|\vec{V}_P|}{|\vec{V}_Q|} = \frac{\eta_1}{\eta_2}$

(B) $\frac{|\vec{V}_P|}{|\vec{V}_Q|} = \frac{\eta_2}{\eta_1}$

(C) $\vec{V}_P \cdot \vec{V}_Q > 0$

(D) $\vec{V}_P \cdot \vec{V}_Q < 0$

Ans: (AD)

Q.14 Magnetic effects of current In terms of potential difference V, electric current I, permittivity ϵ_0 , permeability μ_0 and speed of light c, the dimensionally correct equations is (are)

(A) $\mu_0 I^2 = \epsilon_0 V^2$

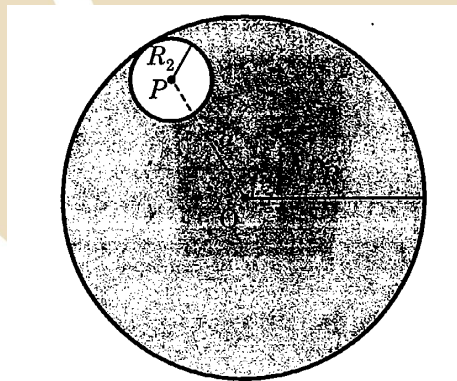
(B) $\epsilon_0 I = \mu_0 V$

(C) $I = \epsilon_0 c V$

(D) $\mu_0 c I = \epsilon_0 V$

Ans: (AC)

Q.15 Electrostatics Consider a uniform spherical charge distribution of radius R_1 centred at the origin O. In this distribution, a spherical cavity of radius R_2 , centred at P with distance $OP = a = R_1 - R_2$ (see figure) is made. If the electric field inside the cavity at position \vec{r} is $\vec{E}(\vec{r})$. then the correct statements is (are)



(A) \vec{E} is uniform, its magnitude is independent of R_2 but its direction depends on \vec{r}

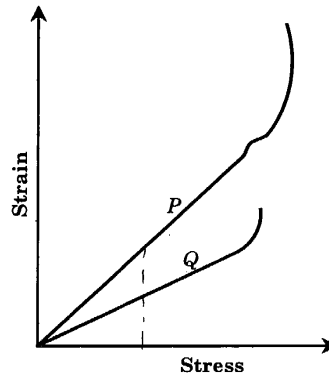
(B) \vec{E} is uniform, its magnitude depends on R_2 and its direction depends on \vec{r}

(C) \vec{E} is uniform, its magnitude is independent of a but its direction depends on \vec{a}

(D) \vec{E} is uniform and both the its magnitude and direction depend on \vec{a}

Ans: (D)

Q.16_{Elasticity} In plotting stress versus strain curves for two materials P and Q, and student by mistake puts strain on the y-axis and stress on the x-axis as shown in the figure. Then the correct statements is (are)



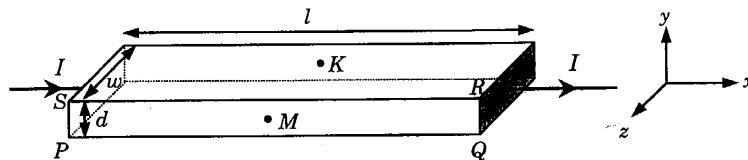
- (A) P has more tensile strength than Q
- (B) P is more ductile than Q
- (C) P is more brittle than Q
- (D) The Young's modulus of P is more than that of Q

Ans: (AB)

PARAGRAPH 1

In a thin rectangular metallic strip a constant current I flows along the positive x -direction, as shown in the figure. The length, width and thickness of the strip are l , w and d , respectively.

A uniform magnetic field \vec{B} is applied on the strip along the positive y -direction. Due to this, the charge carriers experience a net deflection along the z -direction. This results in accumulation of charge carriers on the surface PQRS and appearance of equal and opposite charges on the face opposite to PQRS. A potential difference along the z -direction is thus developed. Charge accumulation continues until the magnetic force is balanced by the electric force. The current is assumed to be uniformly distributed on the cross section of the strip and carried by electrons.



Q.17_{Magnetic effects of current} Consider two different metallic strips (1 and 2) of the same material. Their lengths, are the same, widths are w_1 and w_2 and thickness are d_1 and d_2 respectively. Two points K and M are symmetrically located on the opposite faces parallel to the x - y plane (see figure). V_1 and V_2 are the potential differences between K and M in strips 1 and 2, respectively. Then, for a given current I flowing through them in a given magnetic field strength B , the correct statement(s) is (are).

- (A) If w_1 and w_2 and $d_1 = 2d_2$, then $V_2 = 2V_1$
- (B) If w_1 and w_2 and $d_1 = 2d_2$, then $V_2 = V_1$
- (C) If w_1 and $2w_2$ and $d_1 = d_2$, then $V_2 = 2V_1$
- (D) If w_1 and $2w_2$ and $d_1 = d_2$, then $V_2 = V_1$

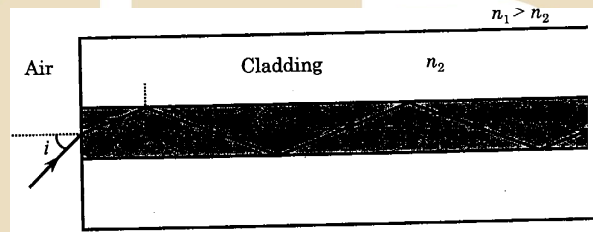
Ans: (AD)

- Q.18 Magnetic effects of current Consider two different metallic strips (1 and 2) of same dimensions (length l , width ω and thickness d) with carrier densities n_1 and n_2 , respectively. Strip 1 is placed in magnetic field B_1 and strip 2 is placed in magnetic field B_2 , both along positive y directions. Then V_1 and V_2 are the potential difference developed between K and M in strips 1 and 2, respectively. Assuming that the current I is the same for both the strips, the correct options is (are)
- (A) If $B_1 = B_2$ and $n_1 = 2n_2$, then $V_2 = 2V_1$
 (B) If $B_1 = B_2$ and $n_1 = 2n_2$, then $V_2 = V_1$
 (C) If $B_1 = 2B_2$ and $n_1 = n_2$, then $V_2 = 0.5V_1$
 (D) If $B_1 = 2B_2$ and $n_1 = n_2$, then $V_2 = V_1$

Ans: (AC)

PARAGRAPH-2

Light guidance in an optical fiber can be understood by considering a structure comprising of thin solid glass cylinder of refractive index n_1 surrounded by a medium of lower refractive index n_2 . The light guidance in the structure takes place due to successive total internal reflections at the interface of the media n_1 and n_2 as shown in the figure. All rays with the angle of incidence i less than a particular value i_m are confined in the medium of refractive index n_1 . The numerical aperture (NA) of the structure is defined as $\sin i_m$.



- Q.19 Geometrical optics For two structures namely S_1 with $n_1 = \sqrt{45}/4$ and $n_2 = 3/2$, and S_2 with $n_1 = 8/5$ and $n_2 = 7/5$ and taking the refractive index of water to be $4/3$ and that of air to be 1, the correct option(s) is(are)
- (A) NA of S_1 immersed in water is the same as that of S_2 immersed in a liquid of refractive index $\frac{16}{3\sqrt{15}}$
 (B) NA of S_1 immersed in liquid of refractive index $\frac{6}{\sqrt{15}}$ is the same as that of S_2 immersed in water.
 (C) NA of S_1 placed in air is the same as that of S_2 immersed in liquid of refractive index $\frac{4}{\sqrt{15}}$.
 (D) NA of S_1 placed in air is the same as that of S_2 placed in water.

Ans: (AC)

- Q.20 Geometrical optics If two structures of same cross-sectional area, but different numerical apertures NA_1 and NA_2 ($NA_2 < NA_1$) are joined longitudinally, the numerical aperture of the combined structure is
- (A) $\frac{NA_1 NA_2}{NA_1 + NA_2}$ (B) $NA_1 + NA_2$ (C) NA_1 (D) NA_2

Ans: (D)